



Direct Driven Kitchen Exhaust Fan

CKE Series

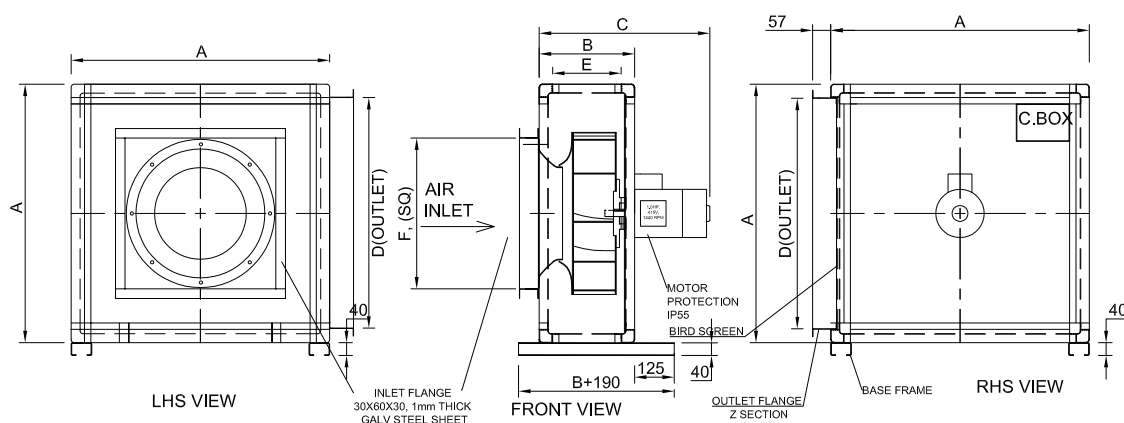
Direct Driven Fans are an economic alternative to the belt driven fans since Backward Curved Aerofoil Impeller is mounted directly on the motor shaft. You save on the cost of bearings, shaft, pulleys & belts, CKE Series fans are available in 6 sizes in capacity up to about 15000CMH.



FEATURES :

- Powder Coated, Acoustically Insulated, Double Skin Cabinet suitable for Outdoor Applications
- High Efficiency Direct Driven Powder Coated Plug Fan with Airfoil Impeller
- Motor Outside the Air Stream, suitable for outdoor applications
- Universal Outlet, can be field modified for Left, Right or Top Exhaust
- Openable Panels for Easy Cleaning & Maintenance

GA DRAWING :



TECHNICAL & DIMENSIONAL DETAIL:-

Unit Model	CMH	STATIC (mm)	MOTOR POLE	Motor Kw	Motor Ph / Voltage	A	B	C	OUTLET D x E	INLET F(SQ)	Maximum Noise at 3m distance in dB(A)
CKE-355	1200	36	4	0.75	3/415	635	245	563	551 x 161	380	54
CKE-400	2000	40	4	0.75	3/415	700	275	586	616 x 191	425	55
CKE-450	3200	46	4	0.75	3/415	780	300	667	696 x 216	475	57
CKE-500	5400	50	4	1.1	3/415	870	327	694	786 x 243	525	61
CKE-560	8000	60	4	2.2	3/415	965	359	704	881 x 275	585	63
CKE-630	13400	60	4	3.7	3/415	1075	400	854	991 x 316	655	65

* All dimensions are in mm.

